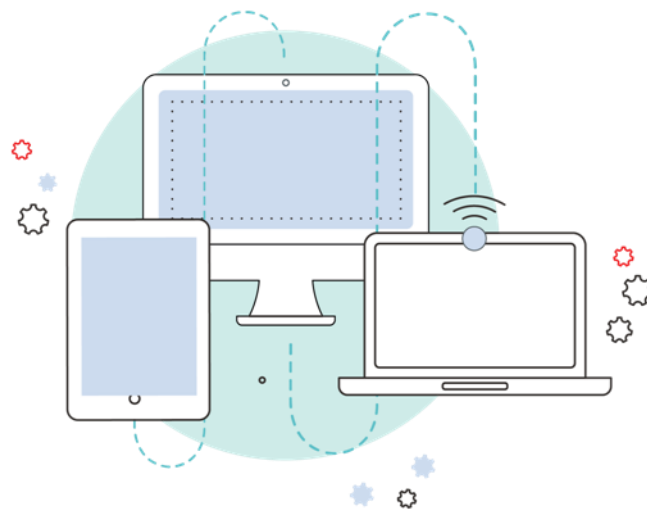




# Accessing your digital resources



A guide for  
**St Patrick's College -  
Ballarat**

**2021**



# Welcome!

There's a lot going on at the start of the school year, so we want to make it very easy for you to get your digital resources set up.

## Provisioned Resources

Provisioned resources are products that have been set up by Campion. This saves you time by skipping the account creation and product activation process.

On the following pages we've provided instructions on what you need to do for each subject.

While each subject may use resources from different publishers, the credentials you need to enter will always be the same.

**Here are the credentials you'll need for each account:**

**USERNAME** = student school email address (e.g. @stpats.vic.edu.au)

**PASSWORD** = school network password

**If you get stuck on any of these websites, we're here to help.**

**Our website has a range of step by step guides and videos at:**

<https://www.campion.com.au/support-help/support-for-parents/>

**Phone:** 1300 433 982

**Email:** [campionhelpdesk@campion.com.au](mailto:campionhelpdesk@campion.com.au)



## Campion MyConnect

<b>Year 7</b>	Humanities, Mathematics, Science
<b>Year 8</b>	Humanities, Mathematics, Science
<b>Year 9</b>	Food Studies, Humanities, Mathematics, Science,
<b>Year 10</b>	Food Studies, Mathematics, Science

---

Please follow these steps to log in to your Campion MyConnect account:

1. Go to:  
<https://myconnectshop.campion.com.au/login.htm>
2. Enter your credentials:
  - **USERNAME** = student school email address
  - **PASSWORD** = (listed on page 1)

---

Alternatively, you can download the MyConnect APP:

1. **Download** the MyConnect app. Click [here](#) to select the appropriate MyConnect app for your device (e.g. iPad, Android, Windows, Mac).
2. **Open the app and log in** using the credentials listed on page 1

Once you have logged in to your MyConnect app, your purchased digital resources will be displayed in your MyConnect bookshelf.

3. **Tap each tile to download the content**, so you are all ready for the start of school.

### Need additional support?

- Click [here](#) to view a video guide or step-by-step instructions on how to log in and start using your digital resource in MyConnect.
- Additional information and support can be found on our website [here](#).



# CambridgeGO Online

To access your CambridgeGO online resources:

- Please click on your CambridgeGO SSO tile from your Champion MyConnect account.



- You will then be presented with the following screen:

### Existing account:

- If you already have an account please enter your CambridgeGO password.

### New user:

- If you are a new user or unsure of your password, please enter **1Textbook**.

If this fails, please press “Forgot password” then retry and enter your new password.

You will only have to do this process once to activate your CambridgeGO SSO account.